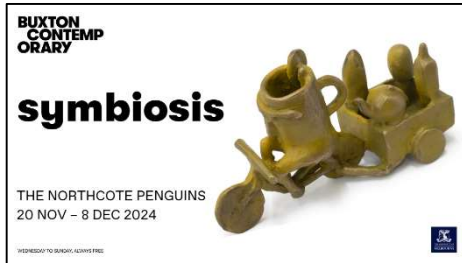


**BUXTON
CONTEMP
ORARY**

**This is an
Easy Read
resource
about the
symbiosis
exhibition.**

Exhibition Information



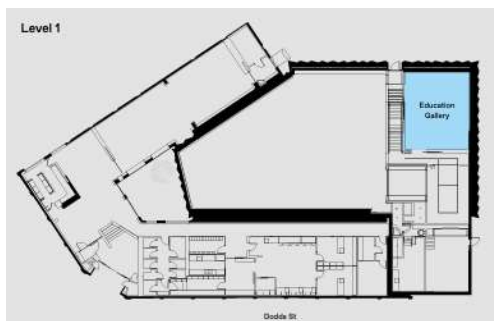
- symbiosis is a group show with Arts Project Australia artist group The Northcote Penguins.



- This show opens on Wednesday 20 November and closes on Sunday 8 December 2024. It is open 11am – 5pm.



- This show will be held at the Buxton Contemporary Education Gallery, upstairs on Level 1.



- Buxton Contemporary's is part of the University of Melbourne in Southbank. The Education Gallery is on level 1 of Buxton Contemporary.

Exhibition Information



- This show has paintings, illustrations, ceramics, collage, video artworks, digital prints, glass, and bronze sculptures.
 - The artists looked at the collection of Russell and Mab Grimwade, and picked objects they found interesting.
 - They visited the collection where it is stored.
 - There are eight artists in the Northcote Penguins. They are Samantha Ashdown, Michael Camakaris, Jordan Dymke, Christian Hansen, Monica Lazzari, Aidan Sefo, Mark Smith and Amani Tia.
 - The images on the left are some of the artworks in the show.
-

About the artist | Amani Tia

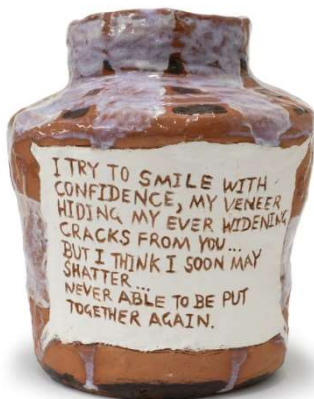
Amani says:

“These works are all classical, the photos that inspired them are a part of history, before cars there were bicycles - it's all history.”



- Amani Tia was born in Melbourne in 1969.
- He joined Arts Project Australia in 2013.
- Amani makes drawings about the people and things around him.
- He is very talented at drawing, and often sketches crowds and exciting moments.
- He also includes objects and parts of his Samoan culture, like city scenes with personal details.
- The images on the left are some of Amani's drawings from the show.

About the artist | Michael Camakaris



- Michael Camakaris was born in Melbourne in 1976.
- He joined Arts Project Australia in 2010.
- Michael makes drawings, paintings, collage, printmaking, and ceramics.
- His art mixes dream-like scenes with detailed marks.
- Michael's work creates expressive pieces with big shapes and twisted figures.
- He includes shapes and symbols inspired by his Greek heritage and culture.
- The works in this exhibition are inspired by the puzzle jug—a type of jug that has a trick to using it.
- Michael has made jugs that don't work properly or can't be used at all.
- The words on the jugs show that the jug knows it can't be used.
- The images on the left are some of Michael's ceramics from the show.

About the artist | Mark Smith



- Mark Smith was born in Melbourne in 1976.
- He joined Arts Project Australia in 2003.
- Mark makes paintings, ceramics, mixed media, video and soft sculptures.
- Mark makes work exploring human life and emotions.
- His ceramic works explore the human body's shape and texture.
- Mark worked with glass blower Ruth Allen to make these works.
- They are responding to candelabras and glass jugs in the Grimwade Collection.
- He was attracted to their beauty.
- Mark is interested in how useful some items are.
- The images on the left are some of Mark's artworks from the show.

About the artist | Monica Lazzari

Monica says:

“My collages are made from cutting, pasting, chance, play, ideas and gut feelings.”



- Monica Lazzari was born in Melbourne in 1985.
- She joined Arts Project Australia in 2006.
- Monica makes paintings and collage works with bold, bright colours, shapes, and patterns.
- Her artworks are full of life and energy.
- Her collages are created through cutting, pasting, playing with ideas, and following her instincts.
- The images on the left are some of Monica's artworks from the show.

About the artist | Samantha Ashdown



- Samantha Ashdown was born in Melbourne in 1979.
- She joined Arts Project Australia in 2000.
- Samantha makes prints, collages, pastel and gouache artworks.
- She likes still life, landscape, and city scenes.
- She uses strong lines and colours that make clear, layered pictures.
- This work is based on a famous painting by Frida Kahlo called What the Water Gave Me 1938.
- The image on the left shows Frida Kahlo's painting.
- Samantha's painting is in her style, and includes her collection of rubbers and sharpeners.
- The image on the left shows Samantha's artwork from the show.

About the artist | Aidan Sefo



- Aidan Sefo was born in Melbourne in 1992.
- He joined Arts Project Australia in 2009.
- Aidan makes lots of different types of artworks.
- Aidan likes to work with film and uses old films.
- Aidan shows new ideas about important moments in history.
- His art feels like it's from another world or place.
- Aidan made a pretend commercial to show some of Russell and Mab Grimwade's objects.
- The images on the left show Aidan's artwork from the show.

About the artist | Christian Hansen



- Christian Hansen was born in Melbourne in 1978.
 - He joined Arts Project Australia in 2017.
 - Christian makes art about his life, everyday scenes, and nature.
 - He likes to try different materials and techniques.
 - His recent art focuses on family, nature, and memories.
 - These artworks are a response to a ceramic ornament from the Grimwade collection.
 - Christian has imagined a story of a hot toddy travelling the world and collecting items to make a drink.
 - A hot toddy is a drink made of water, honey, lemon, sugar and whisky. It should be drunk hot.
 - The images on the left show Christian's artworks from the show.
-

About the artist | Jordan Dymke

Jordan says:

“My work is about seeing myself from different angles. I was interested in the mirror because it put me into the collection.”



- Jordan Dymke was born in Melbourne in 1990.
- He joined Arts Project Australia in 2012.
- Jordan makes paintings, drawings, sculptures, and ceramics.
- Jordan likes making art about himself, using his face and hands.
- His art shows his feelings and tells personal stories.
- The image on the left shows Christian's artwork from the show.

BUXTON CONTEMP ORARY

Visit our websites for more
information:

www.buxtoncontemporary.com

www.artsproject.org.au

Follow us on instagram
@buxtoncontemporary
@artsprojectaust

Opening hours:
Wednesday – Sunday
11am – 5pm