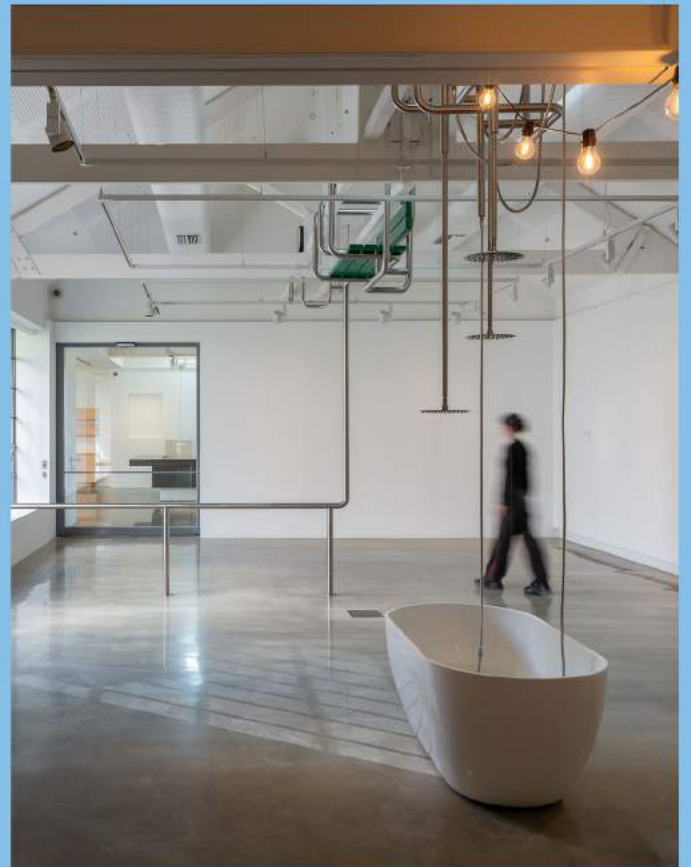


**BUXTON
CONTEMP
ORARY**

LIMITED SEASON OFFER

VENUE HIRE & EVENTS



LIMITED SEASON OFFER
10 May – 13 October 2024
Buxton Contemporary, Southbank

Part of the University of
Melbourne's Museums
and Collections





Top image: Guests enjoying an event at Buxton Contemporary.

Bottom image: Visitors explore Buxton Contemporary, interacting with Yona Lee's *Upper-floor composition*, 2024.

The Exhibition

The same crowd never gathers twice
10 May - 13 October 2024

Test the limits of the 'arena'.

Arenas are the physical spaces where we come together to witness — and participate in— public life. Figuratively speaking, they embody a multitude of 'fields': zones of interest inviting active or competitive engagement. Every arena holds a sense of possibility or uncertain outcome, yet its activities are shaped by specific conditions. Strategically positioned barriers separate spectators from participants. Vantage points delineate roles. Hard structures screen 'backstage' areas from public view. Implicit codes, temporal cues and choreographies guide individual interactions and group dynamics. Whether looking on or joining in, we take comfort in knowing the rules.

Spanning moving image, sound, sculptural intervention and performance, *The same crowd never gathers twice* tests the limits of the arena. The artists consider the social and structural architectures that define these spaces, and by extension, the elastic relationship between performance and reality, audience and participant, public and private. Like theatres, sports stadiums and 'the media', the art gallery is an arena subject to its own specific conditions. Unfolding over five months, the exhibition invites visitors to consider their own roles, expectations and ways of being inside this space.

Exhibition Artists

Cate Consandine, Angela Goh, Riana Head-Toussaint, Laresa Kosloff, Yona Lee, Taryn Simon, and students from the Melbourne Conservatorium of Music.

Venue Hire & Event Opportunities

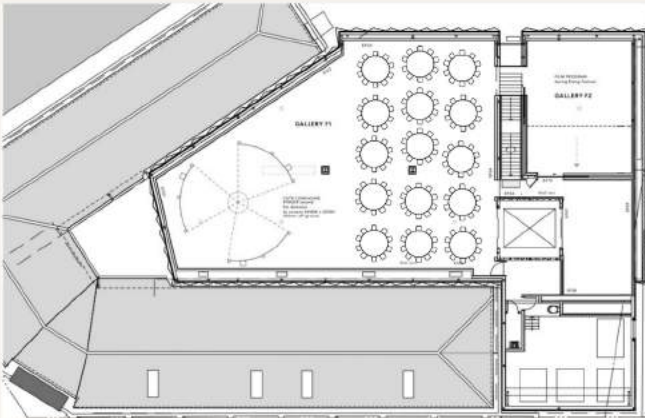
A unique opportunity exists for the duration of this exhibition for guests to enjoy this immersive exhibition alongside a catered food & beverage experience. This is a rare opportunity and not usually available alongside high value art. Available for a limited time only, we invite you to consider this experiential offering for your clients' next event.



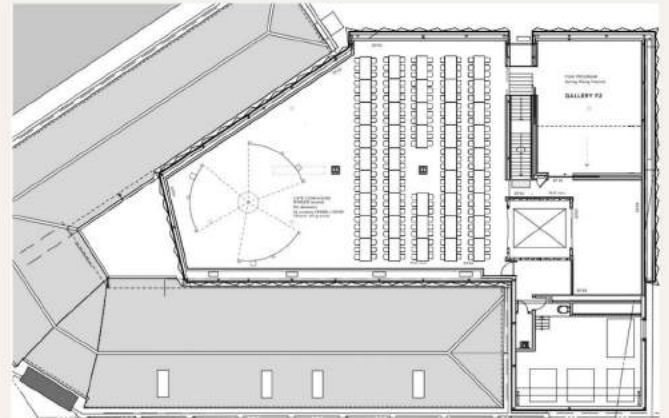
Top image: Guests enjoying *The same crowd never gathers twice* exhibition, featuring Laresa Kosloff's *Fountain*, 1998.
Bottom image: Visitors take in Riana Head-Toussaint's *Animate Loading 1*, 2022.

Event Fact Sheet

- Enjoy a truly unique experience by hosting your cocktail party or dinner immersed within the exhibition.
- Buxton Contemporary can host standing cocktail functions of up to 1000 guests and seated dining events for up to 250.
- With flexible catering options, and with AV provided by our in-house team, speak to us about your requirements and our events team can assist with a bespoke quote for venue and servicing.
- Guided exhibition tours and artist talks are also available on request.



First Floor Galleries - 150pax dining



First Floor Galleries - 250pax dining

SPACE	COCKTAIL	DINING
Entry Foyer	150	30
Ground Floor Galleries	500	NA
First floor galleries	300	250
Whole venue	1000	250

AVAILABILITY	DAYTIME	EVENINGS
Sun - Tues	7am - 5pm	6pm - 11pm
Wed - Sat	7am - 10am	6pm - 11pm



Top image: Installation view of *The same crowd never gathers twice* exhibition.
Bottom image: Visitors interact with Cate Considine's *RINGER*, 2024.

Find out more

Contact mc-events@unimelb.edu.au
for more information
or to arrange a site visit.



BUXTON CONTEMP ORARY

Part of the University of
Melbourne's Museums
and Collections

