

# BUXTON CONTEMP ORARY



NIGHTSHIFTS

26.05.23-29.10.23  
WEDNESDAY-SUNDAY  
FREE ADMISSION



BUXTON  
CONTEMP  
ORARY

# VENUE HIRE + EVENTS



## Acknowledgement of Country

We respectfully acknowledge the Wurundjeri people of the Eastern Kulin nation, the traditional owners of the land on which Buxton Contemporary is situated.

# WELCOME

Buxton Contemporary is a hub for creative engagement and showcases the best of contemporary Australian and International art. Located at the University of Melbourne's Southbank Campus, home also to the Victorian College of the Arts, the museum is a result of a generous donation by art collector and property developer Michael Buxton.

Buxton Contemporary offers polished and elegant spaces for events. Designed by acclaimed architects Fender Katsalidis, the museum houses two distinct spaces for hire, alongside a unique experiential offering for your guests through an ever-changing cycle of innovative contemporary art exhibitions.

Your contribution to our events business helps fund future exhibitions, public programs, and the education of blooming artists.



# FOYER + COURTYARD

The ground floor foyer and adjacent courtyard is a sophisticated setting for standing cocktail events and intimate dinners.

Located at the main entrance of the building in easy access to the museum, the foyer and courtyard can be hired as a standalone area.

## CAPACITY

Cocktail – up to 150

Dining – up to 50

## AVAILABILITY

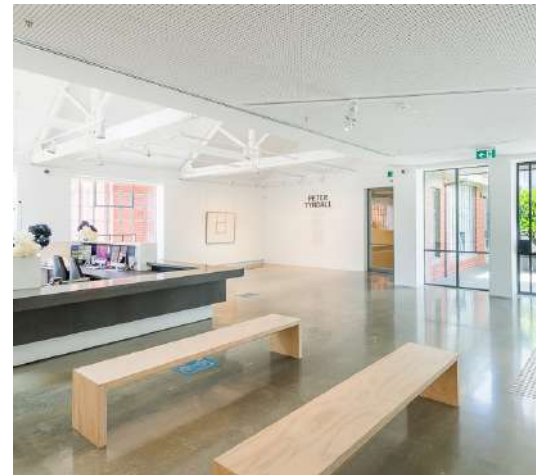
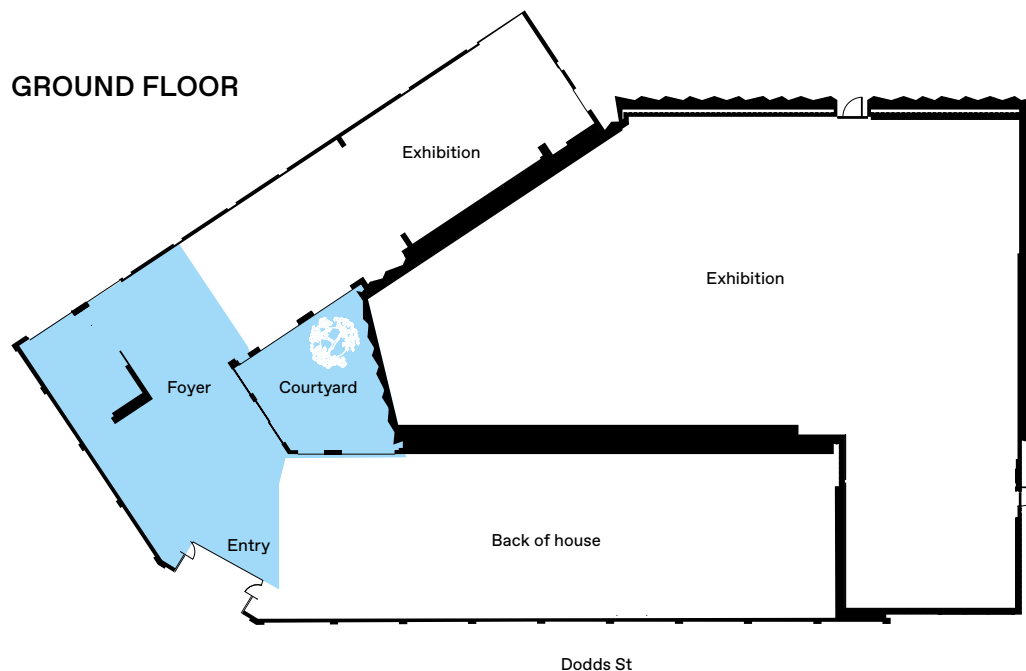
Daytime

Sunday and Monday, 8am-5pm

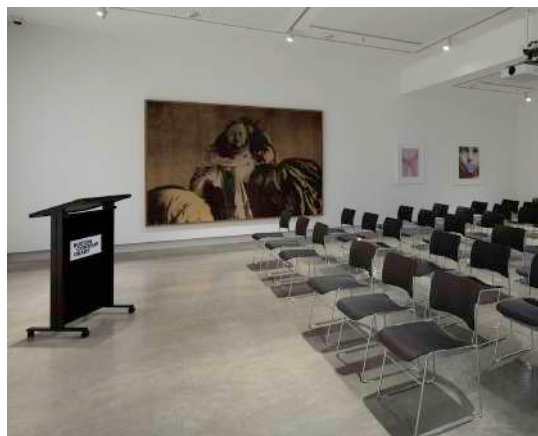
Evenings

Sunday to Saturday, 5pm-11pm

## GROUND FLOOR







# EDUCATION GALLERY

Nestled on Level 1 of the museum within the exhibition spaces, the Education Gallery is a versatile space for hire. With an in-built projector and audio facilities, it is a perfect space for all day conferences, meetings, workshops, or presentations.

## CAPACITY

Theatre – up to 80

Workshop – up to 48

## AVAILABILITY

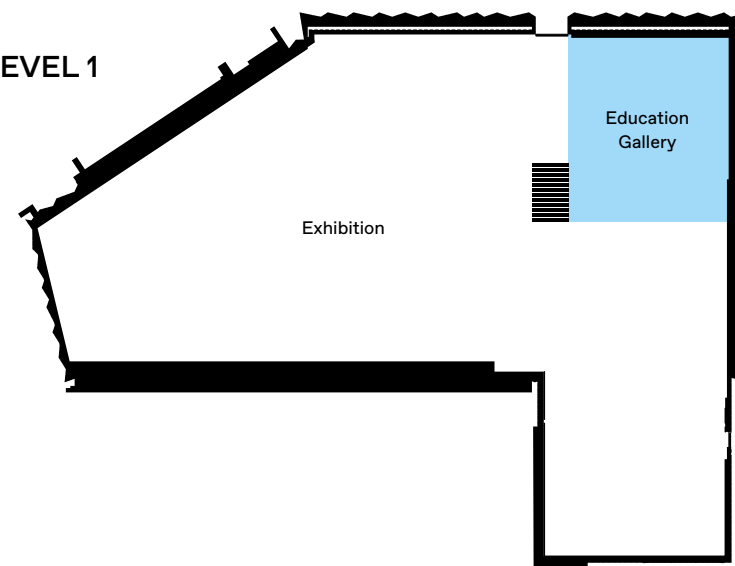
Daytime

Sunday to Saturday, 8am - 5pm

Evenings

Sunday to Saturday, 5pm-11pm

LEVEL 1



# WHOLE VENUE

Immerse yourself in Buxton Contemporary's entirety and create a memorable, unique experience for your guests by including an exhibition experience within your event. For this hire, you will have access to both the entire Ground Level and Level 1 spaces, including a team of gallery invigilators to provide insight into the artworks amongst your events.

Buxton Contemporary presents biannual exhibitions engaging local, national and international audiences with the best of contemporary Australian and international art.

For more intimate experiences, we can organise an artist or curator to give a guided tour of the gallery, delving into the artistic practice and themes of the current exhibition.

## CAPACITY

Private exhibition viewings are available for up to 500 guests, facilitated by our team of gallery invigilators.

Curatorial tours are recommended for small groups of less than 30 people and are pendant on curator availability.

Transform your event into an immersive cultural experience by hosting it within Buxton Contemporary's distinctive gallery spaces. With exclusive access to both Ground Level and Level 1 galleries, your guests can explore contemporary art while our expert gallery attendants provide thoughtful insights into the featured works.

Enhance your event with an intimate, curator-led or artist-led tour of the galleries, offering your guests deeper insight into the artistic vision and themes of our current exhibition.

## AVAILABILITY

Daytime  
Sunday and Monday, 8am-5pm  
Evenings  
Sunday to Saturday, 5pm-11pm







# EVENT CATERING

At Buxton Contemporary, you are welcome to engage your own preferred caterer to service your event. Should you need some inspiration, here's a list of catering partners we love to work with:

- [Atlantic Group at Melbourne Connect](#)
- [Millstone Patisserie](#)
- [Dody Oliver](#)
- [The Cocktail Cart](#)

We encourage you to arrange a site inspection with your caterer prior to the event to view the kitchen facilities.

Get in touch with us at  
[mc-events@unimelb.edu.au](mailto:mc-events@unimelb.edu.au)

Take a look at some of our other fantastic  
venues available for your next event:

- [Science Gallery Melbourne](#)
- [Grainger Museum](#)
- [MPavilion Parkville](#)
- [Old Quad](#)
- [Ian Potter Museum of Art](#) (Re-opening 2025)

Unless otherwise specified, all artwork pictured in this document is courtesy of the Michael Buxton Collection, the University of Melbourne Art Collection, donated through the Australian Government's Cultural Gifts Program by Michael and Janet Buxton, 2018.

**BUXTON  
CONTEMP  
ORARY**

Buxton Contemporary Art Museum  
Corner Southbank Blvd and Dodds St  
The University of Melbourne  
Southbank, VIC 3006  
[buxtoncontemporary.com](http://buxtoncontemporary.com)

